

The Promise

The People of Covenant are called to:
gather, grow and go serve with Gods Love!



October 2022 The Monthly Newsletter of Covenant Lutheran Church, ELCA

Inside This Issue

1. A Note from the Pastor
2. Council News
3. Call Team Announcement
4. Volunteer Schedule
5. Opportunities to Connect
10. Treasurer Report
11. Property Committee
16. Celebrate
17. Stewardship
19. Education Information
21. Social Action Invitation
22. Covenant Fall Clean Up
23. Health Topics
24. Clothing Center
25. Gratitude
31. Contact Information

Thank you, thank you, thank you! What a wonderful celebration it was on September 25th for my installation as Covenant's senior pastor! I truly hope that everyone felt included in the celebration as we move into our next chapter together. Deep gratitude and thanks to the call team for their work leading up to the call and continuing to pull together the information gathered from all of you. Thank you, Chris Melland, Mark Herbst, Judy Heil, Ingrid Thompson, Jocelyn Edwards, Craig McCallum and Denise Pigarelli for saying yes to forming this team and discerning this call. Thank you to the Council for their work and excitement when you were brought into the process. Thank you to everyone who attended the congregational meeting and vote. Thank you to the hospitality and parish care teams for the delicious foods and beautiful setting and floral enhancements on Installation Sunday. Thank you to the Senior and Bell Choir and Sunday School for their singing and participation in the Children's time on Installation Sunday. Thank you all for your welcome of my family and friends, too.

This is an exciting time to be a part of Covenant. I look forward to the ways God will continue to invite, challenge, test, encourage and empower us to serve in this world. Our Sunday School is up and running and that is exciting! We have some upcoming fellowship opportunities to reconnect and renew friendships with activities many didn't feel comfortable doing during the pandemic, and some still don't.

I pray for many years of faithful and effective ministry together.

Thank you and God bless, Pastor Wendy



Council News

It's a beautiful fall morning – sunny, cool, beautiful colors with blooming mums, lush green lawns, golden crops – Fall is one of my favorite times of year.

Pastor Wendy's installation was this past Sunday. What a beautiful service and message from Bishop Joy. Wonderful music – "I Just Want to Be a Sheep" and the "May the Peace of the Lord". Thank you to our musicians. It was great to see Pastor Wendy's family and friends join her for this occasion. A beautiful luncheon following the service with flowers, wonderful food, and great fellowship. Thank you to the Hospitality and Parish Care teams for all their hard work.

While I am thanking and praising God for these beautiful things, I am reminded there is so much pain and suffering in our country and in our world. Hurricane Ian is hitting Florida as I am typing this message, filling people with fear and devastating their homes and lives; there are war-torn countries like Ukraine; wildfires; floods; tornados - so many hurting people. I pray that God will surround his children with his loving care, strength and hope.

The neighborhood surrounding our Sister Parish in Dorado, Puerto Rico also experienced catastrophic damage following Hurricane Fiona which slammed their countryside, causing significant flooding and loss of electricity.

Covenant's Council is making a special appeal for funds to send to our Sister Parish, Ascension Lutheran Church. These funds will help them help their neighbors. A box for donations will be set up in the Narthex for 2 weeks beginning Sunday, October 9th. Please consider making a gift to help our brothers and sisters in Christ. Any cash is welcome and if you wish to write a check, please make it payable to Covenant Lutheran Church and write "Help Sister Parish" in the memo line. The Covenant Endowment Board met on Monday night and have agreed to match our gifts up to \$750.

"May the Peace of the Lord Go Always with You"

Let us pray: O God, the strength of all who trust in you, we plead this day for your courage and care for those who struggle. Protect those in danger; give help to the wounded, liberty to the captives, recovery to the sick, and rest to the dead; and comfort those who mourn. In your mercy, restore to us and all people the blessings of peace, for you live and rule eternally.

Amen.



Call Team Announcement



Covenant Call Team News

The Call Team met on September 21st, 2022.

The focus of the meeting was to review all input from the Council, staff, committees, small groups and individuals regarding Covenant's past struggles and 'lessons learned', describing Covenant today, visions for Covenant's future, and how can Covenant engage and minister to the larger community.

Through the Team's discussions, they were able to carve out trends in comments the most common ideas brought out. Those significant trends will be captured in the Team's final report to the Synod and Pastor Wendy.

The Team will also share their final report with Covenant members after the worship service on Sunday, October 23rd.

The Call Team thanks each and every person who contributed in any way for sharing information, thoughts and ideas during the Call process. Your prayers, support and encouragement of the Team were deeply appreciated and valued.

The Team is wrapping up its responsibilities and looks forward to sharing our mutual ministry with Pastor Wendy. We are thrilled to have her on our journey to spread the Word and love of God within and beyond the walls of Covenant.



Volunteer Schedule

Role	Oct 2	Oct 9	Oct 16	Oct 23
Assistant Minister	Vodak, Greg	Sime, Jean	Heil, Judy	Peterson, Stephen V.
Lector	Nelson, Thomas P.	Heil, Judy	Brekken, Monty	Tarpinian, Gary
Usher Team Leader	Nissler, Karl	Westrand, Tamarine	Sime, Norm	Chose, Thomas
Ushers	Anderson, Thor Eversoll, Mike Grefsheim, Larry Olson, Larry E	Heil, Matthew Heil, Judy Tarpinian, Gary Vodak, Greg	Christian, Thomas Peterson, Stephen V. Seamonson, Mark Sime, Jean	Cope, Jack Cope, Helga Maag, Ella Pietruszynski, Oliver Surrell, Jude
Communion Assistant	Royston, Rebecca	Royston, Rebecca	Royston, Rebecca	Royston, Rebecca
Altar Guild	Sime, Jean Sime, Norm	Sime, Jean Sime, Norm	Sime, Jean Sime, Norm	Sime, Jean Sime, Norm

Here are the Worship Volunteer schedules for the month.

Please let the office know if you are unable to make your scheduled date or if you are interested in serving but not currently being scheduled.

Amanda will be happy to get you on the volunteer schedule as your time allows!



Also, a new opportunity:



Marijo Vols is organizing a group to provide meals to members returning home after a hospital or rehab stay.

The idea is to prepare casseroles, soups, brownies, bars. Or other easily frozen meal and dessert items, in the kitchen at Covenant as a group. To be delivered to member as needed. If you are interested in helping with this ministry group please contact Marijo Vols!

Email: dvols@chart.net or 608-873-0622

After waging interest Marijo will set a date to meet and discuss!

Thank you for your kindness!





Covenant Lutheran Book Club

Discussing:

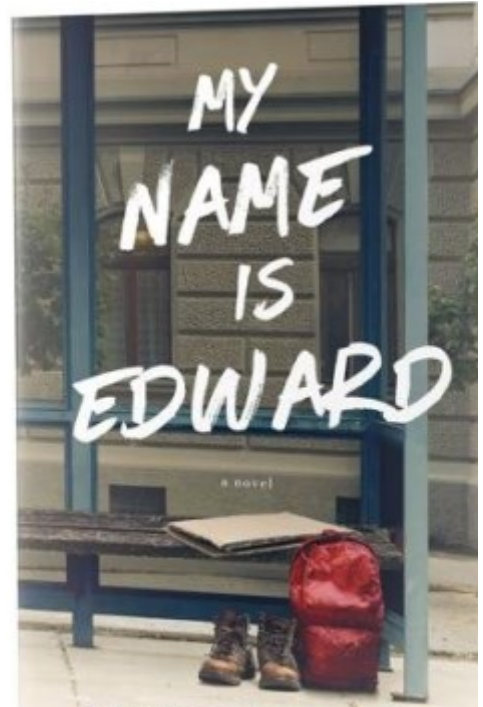
My Name is Edward

by Annmarie Topel

Meeting: Tuesday, October 11th, at 1pm

At Jan Walkers home.

We Encourage Everyone to Join,
contact the office for more information!



Bible Study returns to Wednesday Evenings

Join Wednesdays @ 7pm

in-person in the Gateway Room or via zoom!



WE WOULD LOVE TO HAVE YOU IN THE BELL CHOIR!

You don't need to know how to read music, we can teach you everything you need to know.

We are a fun, friendly and inviting group!

It is a small commitment with large rewards!

Rehearsals are Wednesdays from 5:30 to 6:30

(with one week off per month)

and we play about one Sunday a month.

Anyone in 6th grade and up is welcome.

Contact Meghann at meghann_foug@yahoo.com with any questions!



OR... COME SING WITH US!

You may have noticed that the Senior Choir is a bit smaller than in years past. Whether you sing soprano, alto, tenor, or bass, we'd love to add your voice to the group!

If you're wondering whether you have what it takes to join the choir, here's a quick skills inventory:

1. Musical Ability--Are you willing to join your voice with others to help lead worship and praise God in song?
2. Physical Fitness--Can you lift a copy of the hymnal?
3. Geographic Knowledge--Can you find your way to the sanctuary?

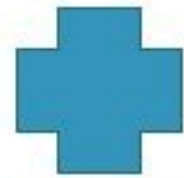
If you answered "yes" to the above questions, please join us for rehearsal at 8:15 on Sunday mornings. For more information, contact Beth Gardner (bethgardner5678@gmail.com or 608-873-9426) or talk to any choir member.



You're Invited: Opportunities to Connect



Bring your pets for a



PET BLESSING



DOGS, CATS, CAGED PETS, STUFFIES, TOO!

Saturday, October 8, 11:30-12noon

We will also take any in-kind donations of pet food to be distributed by the Stoughton Food Pantry.

**COVENANT LUTHERAN
CHURCH**

1525 N Van Buren, Stoughton

ALL ARE WELCOME

Come as you are!

covluth.org

You're Invited: Opportunities to Connect

Friends at Covenant,

Pastor Wendy and I are trying to bring us together to just talk and visit. We'll call ourselves **The Covenant Lunch Bunch**, and if desired we can make it a regular event.

Come join us at **11:00am on Thursday, October 27th**, at the Sunrise Family Restaurant in Stoughton for lunch, Dutch treat.

Please let me or the church office know if you'd like to join us.
Hope to see you then.
Ann Nelson

Home: 608-873-6077
Cell: 608-575-7179



Looking for an **Easy, Stress Free** way
to **Get Involved** at Covenant Lutheran Church?

We have opportunities for you!!

Is it a weekly, monthly or seldom commitment you are looking for?
We have many ways to get involved!

Sunday Worship Service Assistants

Weekday Service Prep

Church Committees

Sunday School

& Much More!

Contact the office if you're interested in information
on our current Volunteer Opportunities!





**Requesting 3 volunteers
to prepare and serve food
10:30am-1:30pm,
the second Friday of each month
at St. Marks in Madison**



If you are able to help please contact Pat Johnson at
608-535-0441 or johnson.pat.skip@gmail.com.

Mark those calendars, and contact Pat today!



Hurricanes have shattered Puerto Rico

Now as much as ever, it is important to deepen our connections
spreading faith and hope in times of uncertainty.

If you would like to help with maintaining and deepening our
congregation's relationship with our sister Parish:

Ascencion in Dorado Puerto Rico,



please see one of the Emmaus Team members:
Kathy Andrusz, Beth Anderson,
Tamarine Westrand, Julie Helland.



Thank you for all the ways you help!



Treasurer's Report

TREASURER'S REPORT JULY 2022

	Current Month Actual	Same Month Last Year Actual	YTD Actual	YTD Budget	YTD Last Year
INCOME					
Contributed Income	14,786.00	16,172.00	136,994.27	148,750.05	124,107.56
Misc. Benevolence	-	-	7,590.00	466.65	-
Other Income	1,361.52	4,667.64	8,204.6	26,773.85	21,164.98
TOTAL INCOME	16,147.52	20,839.64	152,788.87	175,990.55	145,272.54
EXPENSE					
Mission Partners	1,538.12	1,517.20	20,034.04	14,875.55	14,593.04
Staff	18,441.88	4,680.31	102,394.83	11,0735.40	73,678.37
Education	21.82	-	3,898.99	3,850.00	668.11
Stewardship	-	-	-	408.35	233.50
Congregational Life	-	-	114.12	437.55	36.00
Social Action	-	100.00	100.00	583.35	250.00
Worship & Music	945.00	444.00	4,644.80	4,258.35	1,611.21
Office Administration	1,588.22	-654.38	15,921.36	16,021.30	13,145.79
Occupancy	1,574.89	1,467.12	25,501.70	24,820.85	22,090.59
TOTAL EXPENSE	24,109.93	7,554.25	172,609.84	175,990.70	126,306.61
INCOME – EXPENSE	-7,962.41	13,285.39	-19,820.97	-0.15	18,965.93

AUGUST 2022

	Current Month Actual	Same Month Last Year Actual	YTD Actual	YTD Budget	YTD Last Year
INCOME					
Contributed Income	21,124.25	13,837.25	158,118.52	170,000.04	137,944.81
Misc. Benevolence	-	-	7,590.00	533.32	-
Other Income	6,079.22	1,091.09	14,283.82	30,598.68	22,256.07
TOTAL INCOME	27,203.47	14,928.34	179,992.34	201,132.04	160,200.88
EXPENSE					
Mission Partners	1,477.61	1,383.73	21,511.65	17,000.64	15,976.77
Staff	13,401.75	4,647.12	115,796.58	126,554.72	78,325.49
Education	1,454.35	60.40	5,353.34	4,400.00	728.51
Stewardship	-	-	-	466.68	233.50
Congregational Life	169.07	-	283.19	500.04	36.00
Social Action	-	-	100.00	666.68	250.00
Worship & Music	2,624.42	517.78	7,269.22	4,866.68	2,128.99
Office Administration	2,362.82	1,497.84	18,284.18	18,310.04	14,643.63
Occupancy	1,770.18	1,773.39	27,271.88	28,366.68	23,863.98
TOTAL EXPENSE	23,260.20	9,880.26	195,870.04	201,132.16	136,186.87
INCOME – EXPENSE	3,943.27	5,048.08	-15,877.70	-0.12	24,014.01

I hereby submit financials for July & August as approved by council. Per usual, we are fairly on target with our overall budget total; however, it is concerning that year to date our expenses have exceeded our income. We still have a few months to go in the fiscal year and I am hopeful that we can reduce that amount. Thank you for your continued support. If you have any questions, please don't hesitate to contact me.

Donna Tarpinian, Treasurer

Property Committee

The Great Flood

Over the weekend of October 11th, we had a huge storm that dumped over 5 inches of rain in our area. On Monday morning we found water pouring from the roof into the office areas. We took some pictures to show you what happened.

Water on the Flat Roof above the Offices

Water was 14" Deep



4 Drains were Clogged



Drains are normally cleaned in the fall after the leaves have fallen.

Draining the Water from the Roof

High Tech Drain Clearing



Gushing water from drain spouts



Property Committee

Newly Formed Covenant River



Damage to the offices

Printer Room



Pastor Wendy's Office

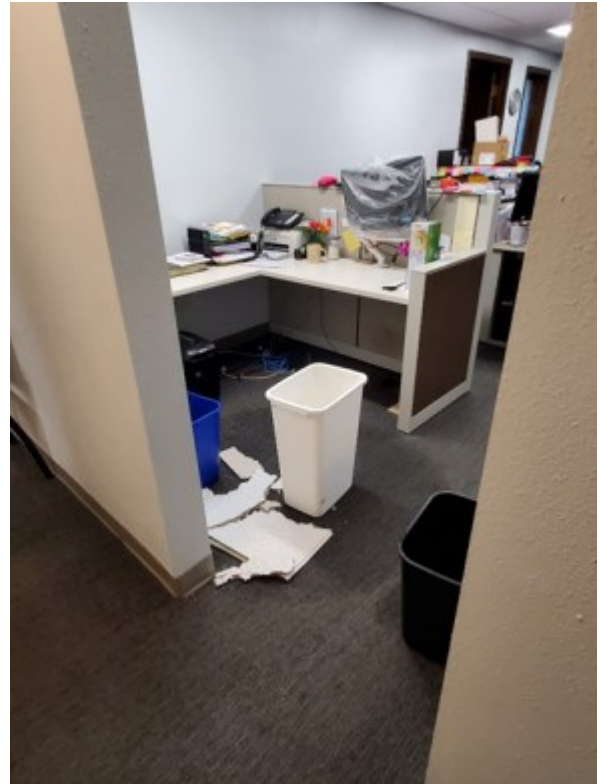


Property Committee

Karla's Office



Amanda and Carol's Office



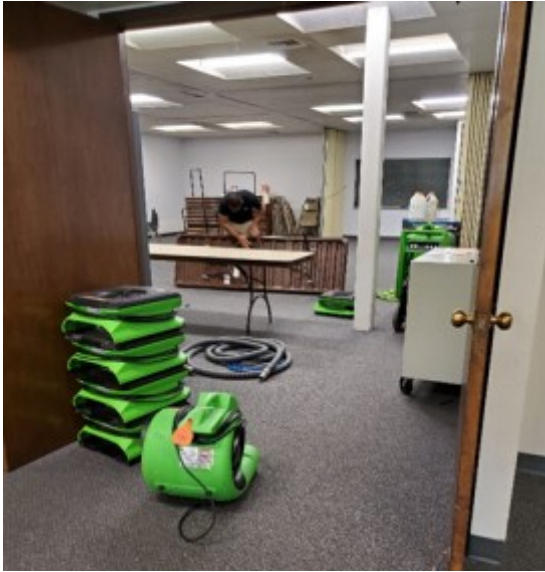
Drained Roof – One of the roof drains is circled



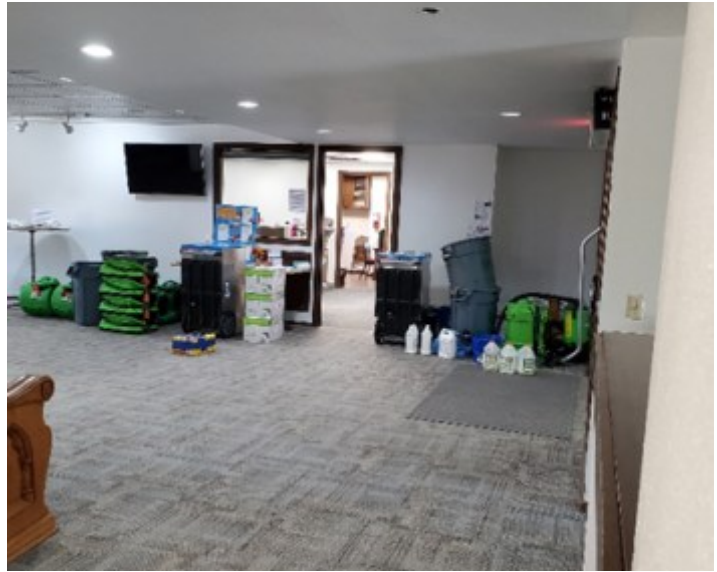
Property Committee

Clean-up

Lots of Fans



Lots of dehumidifiers



Carpets were cleaned and treated with anti-mold/anti-bacterial cleaners.

The Office smelled **fresh and clean** after the service was performed!

Root Causes

Build-up of dead leaves during the summer



Property Committee

Drain outlets are too small

Small leaves are from the tall trees



Solutions

Drain size is going to be increased to stop or reduce clogging.

Drains will be checked and cleared in each of the non-winter months.

Trees may need to be trimmed or removed.

Special Thanks

Unexpected water events require quick thinking and a lot of hard work to protect the equipment and clean up the damage. We went from a disaster on Monday to Church as normal on Sunday. Special recognition goes to Michael Hirsch, Pastor Wendy, Amanda Burian, Carol Brekken, Karla Cornell-Wevley, Joe Oakland and Mike Gilbert along with Paramount Roofing, Duralast Roofing Materials and Church Council members for approving Serv-Pro cleanup and mold prevention services.

Peace and Friendship, Mike Gilbert

Celebrate



FOR
GOD'S WORK
WE ARE
GRATEFUL



Thank you for bringing us together!



Stewardship

As you grow in faith so does your journey with God. It's exciting to think of the footprints we leave as we follow Jesus. Giving through faith helps us to understand all of what God can do.

Your footsteps will take you on that journey to God. Please consider your giving journey as part of that road. As I grew in my faith, I would increase my giving to continue on this journey. This giving has taught me more about my faith and what giving brings to my church and congregation. Please consider giving so that we may carry out God's mission to Gather Grow and Go Serve. In this way we grow in faith and help others.

Christy Unzicker

Growth Steps Giving Challenge

✦ Find the step that matches your current weekly giving.

✦ Prayerfully consider increasing your giving by one step, or increase by 1%

What percentage of
income do
you give?

Weekly giving
÷
Weekly income
=
Percentage of giving
(.10 = 10%)

\$100 - \$150

\$75 - \$99

\$50 - \$74

\$40 - \$49

\$30 - \$39

\$20 - \$29

\$15 - \$19

\$10 - \$14

\$5 - \$9

\$1 - \$4

Covenant's 2023 Stewardship



What Shall I Return to the Lord?

Ways to give:

- Cash/check in Covenant offering envelopes
- Bill Pay – a check mailed by your bank to Covenant (saves you a stamp & fees!)

Online through Vanco - [Home | Covenant Lutheran Church, ELCA \(myvanco.com\)](https://www.vanco.com)

- QCD – Qualified Charitable Distribution – Tax-free gift to Covenant from your IRA

Pledge Sunday - We would like the pledge cards returned on or by October 30. Help us meet our goal of 90 pledge cards this year!

After worship on October 30, “waffle on down” to the fellowship hall for a Waffle Brunch! Bring your favorite topping!

Qualified Charitable Distribution (QCD)

If you have an IRA and are at least 70 ½ years old, a QCD can be a very tax- effective way to provide financial support to Covenant. With a QCD, a payment would be sent directly from your IRA to Covenant. This payment would not be included as taxable income on your Federal and Wisconsin taxes. **Talk to your tax accountant or financial advisor to see if a QCD is a good option for you.**

Education Information

From the Education Coordinator:



I wanted to start with a huge thank you to the congregation. Since joining Covenant in the role of Education Coordinator, I have had so many positive comments about my role and having children as a vital part of the congregation and church services. The Education Team has worked so hard to keep programming for young people alive during a very difficult time. Now we hope to move forward with the blueprint they created.

There is a bit of division of labor in the youth area of the church. I am currently working with youth through 6th grade. Once children start confirmation, they begin working with Kathy Andrusz. Both of us are happy to pass concerns and questions on to each other.

In Sunday School, there are two groups who meet. We start off together working on songs we can later share during a service. Then students age 3 through first grade work on the Spark curriculum that was created for their specific age group. It follows the liturgy and helps them to know stories from the Bible. The older children work together to understand the liturgy for the Family Service on the second Sunday of the month. We work on what students will be contributing to the service and a big idea that comes from the liturgy. This month's big idea is gratitude.

We have also talked about a Sunday School offering. We will be using the offering some weeks to save money to purchase a gift from [ELCA Good Gifts](#). If you would like to contribute towards the purchase of an animal by the Sunday School, put some of your extra change into the Sunday School offering basket that will be out on Family Service Sundays.

On October 28th from 6:30 to 8:00, there will be an activity for making haunted houses similar to gingerbread houses. Please let us know if you would like to join us. We want to make sure we have plenty of supplies. If you have friends outside the congregation who would like to come with you, just add them to this [RSVP](#) or contact the office.

Karla Cornell-Wevley



Education Information

From our Confirmation Coach:

In Confirmation this year we are continuing our work with the curriculum Confirm not Conform and adding some kitchen activities from another group of lessons Cafeteria Confirmation. We welcomed two new 7th grade students into confirmation this year as well as our 2 continuing 8th graders. We have spent the first few times together coming up with ground rules for our discussions and learning about navigating the Bible and different metaphors for God. Turning heavy cream into delicious whipped cream has a lot to do with the same "breath of God" that we find in the book of Genesis.

Kathy Andrusz - covlutheraned@covluth.org
she/hers
Youth Education Coordinator (Confirmation)
Covenant Lutheran Church
Stoughton, WI



Do you connect well with High School Youth?

We need you!!



We would like to begin offering some activities for high school youth. We have some ideas for November and December.

We would love some extra adults involved, especially a few males!

Please prayerfully discern if this is an area you could try out and see if it's a good fit for you.

Contact Pastor Wendy if interested or
to suggest someone you think would be good with youth.

Can you help with Sunday School?



There are many opportunities to lend a hand.
No commitment is too short of too long!





**Meeting Hybrid by Zoom and
in the Gateway room**

November 14th at 6:30 pm

**Scan the QR code below to join
the zoom meeting.**



You can also click [Here](#) to Join the Zoom Meeting!





We've got an opportunity!

Covenant's Outdoor Fall Clean Up

Are you able to help spruce up the grounds for the coming season with us?

Scheduled for: October 15

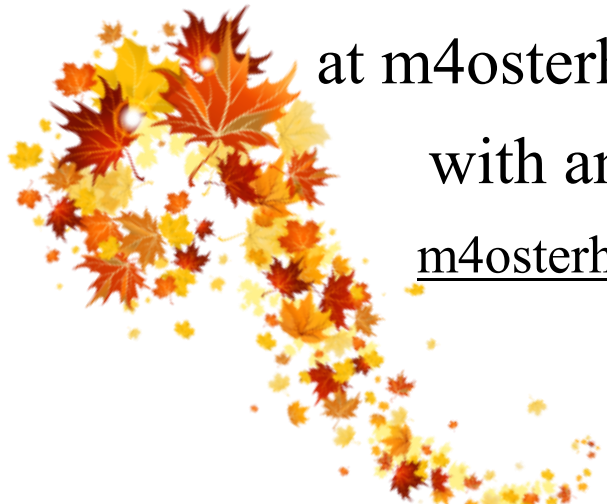
Rain Date: October 29

Contact Michelle

at m4osterhaus@gmail.com

with any questions!

m4osterhaus@gmail.com



October 2022 topic:

10 Questions to ask Your Pharmacist



1. How do I create an emergency supply of my prescription medicines? (FYI: laws vary by state)
2. What over-the-counter medications would you recommend that I keep at home?
3. How should I dispose of expired, unwanted or unused medications?
4. How much medication should I take with me when I travel?
5. Is it okay to share medications with a friend or family member if they take the same kind of medicine?
6. What vaccines/immunizations do you provide/administer?
7. Could you help me synchronize my medications so refills of different medications can be filled at the same time?
8. What medication monitoring/coaching/management services do you provide?
9. Could you check my blood pressure for me?
10. Where should I store my medications at home?

In faith and health, Denise Pigarelli



Resources: Denise (as a pharmacy educator),
<https://blogs.cdc.gov/publichealthmatters/2022/09/pharmacists-day/>



Stoughton Clothing Center helps families!



The Clothing Center is accepting new and very gently used, freshly laundered clothing for all ages especially school aged kids in PK, elementary, middle and high school.

The Clothing Center has a special need for current fall styles.

Everyone is welcome to shop the Stoughton Clothing Center!

No referral or identification is needed!

Our current schedule is posted on our website (www.stoughtonclothingcenter.com). We are also open by appointment via email at contact@stoughtonclothingcenter.com or message us through our Facebook page The Clothing Center.

The Stoughton Clothing Center is located at 1525 Van Buren St. at the back entrance of Covenant Lutheran Church. Typical weekly hours are Tuesdays and Fridays from 10 am – noon, and Thursdays from 10 am – 5:30 pm.

The Center will be open additional hours for winter needs and also working with school social workers to get the word out to families!

The Clothing Center is extremely appreciative for the partnership with Covenant as they work to serve a need in our community.

Special thanks to volunteers and clothing sponsors!



Together we build a Safe, Supportive Community!



Thank you to our
**Members, Volunteers, Friends, Neighbors,
Musicians, Pastor and Staff!**

Covenant Lutheran Church **SURVIVES** on the
DEDICATION & LOVE you **SHARE!**

The world is blessed by your generosity
Blessings to you as you continue to bless others
May God's Grace and Love Surround you!



Gratitude

Pastor Wendy + Covenant,
♡♡ Thank You So Much ♡♡
I am so blessed to be in
Community with you!
Thank You for all of Your Kindness!
Amanda



Dear Covenant church Council
and congregation,

Thank-you so much for
the beautiful flowers and
nice card. It sure was a
surprise.

I am grateful to be
able to work in the church
office.

Sincerely,
Carol

Dear Members of Staff of Covenant Lutheran Church,
On behalf of the staff + volunteers of the ATP
program - we say "thank you so very much!" We
are so grateful for your generosity and so
appreciate your support to keep the Affordable
Transportation Program a safe + reliable program
that helps those in need.

Thank you Again,
Staff + Volunteers
of
ATP



Gratitude



Lutheran
Campus
Ministry
Madison, WI

325 North Mills Street
Madison, WI 53715

608-257-7178

www.lcmmadison.org

September 12, 2022

Covenant Lutheran Church
1525 N Van Buren St
Stoughton, WI 53589-1028

Dear Friends,

Thank you for your recent gift to Lutheran Campus Ministry. Your ongoing support ensures that students at UW-Madison have a community of faith that supports them and accompanies them during their formative college years.

This semester, we are welcoming students back to campus with a wide variety of opportunities to encounter God, grow in faith, and deepen relationships with other students. LCM is thrilled to be hosting a seminary intern this year. Vicar Alex Linn, who will be leading a small group for students this fall, will work with students throughout the year as he grows in leadership and prepares for ordained ministry.

As is always the case in the fall, we have been diligent in welcoming new students to campus and reaching out to the students who congregations and individuals referred to us over the summer. Our student ministers are inviting, supporting, and connecting newcomers to Lutheran Campus Ministry.

In many ways, our ministry looks like it did before the beginning of the pandemic. But our work is more vital than ever as we receive students who are still recovering from the loneliness and stress of the pandemic. The students who are seeking out campus ministry are more ready than ever to enter into the meaningful work of being people of faith in community together.

Now, more than ever, your support makes our ministry possible. The ministry of LCM and the young people who have been blessed, nurtured, and fed through this ministry are possible because of your trust in God, and your trust in what the Holy Spirit is doing here on campus. Your gift of \$14.78 on 8/18/2022 gives us confidence as we gather students for prayer, support, and spiritual formation.

Thank you again for your gift. May God bless you.

In Christ,

Pastor Emily

Rev. Emily Tveite
Campus Pastor & Director

*Thank you for
your support!*

*Lutheran Campus Ministry is a nonprofit organization
under IRS code 501(c)(3). No goods or services were
provided by the organization in return for this donation.*





Global Health Ministries

Helping the hands that heal



BOARD OF DIRECTORS:

President

Sue Simonett, MBA, BA

Vice President

Lon Kightlinger, MSPH, Ph.D.

Immediate Past-President

Dan Olson, MHA, FACHE, CMPE

Secretary

Jon Moe, MS, RN, PHN

Treasurer

Ken Borle

Connie Lien Adams, MT, ASCP

Dr. Simon Aroga

OSEELC, Cameroon

Sarah Brock, PA-C

Jim Buhr, BA, MD

Anne Langdij,

ELCA Global Mission Rep

Prosperity Eneh, PharmD

Peter Getts

Glen Holt, MD

Allen Klingsporn

Elah Madukuli

Miriam Monson, RN, BSN

Fehy Rabemahefa

Rev. Samuel Wolff

STAFF:

Rev. Doug Cox

Executive Director

Kim Dickey

Director of Communications

Cealligh Anderson Smart

Director of Philanthropy

Rob Thames

Director of GHAP

Scott Lien

Director of Operations

Bart Oothoudt

Director of Finance & Administration

John Scheck

*Warehouse Manager/
Volunteer Coordinator*

Michelle Hoffart

Office Manager

Don Seaburg

Manager of Waste to Revenue

Ashley Rabemahefa

Social Media Coordinator

Global Health Ministries

3310 S. Durbin Ave. Suite NE

Stoughton, WI 53582

Phone: 535-5432

www.ghealthministries.org

August 26, 2022

Wendy Moen

1525 N Van Buren St

Stoughton, WI 53589-1099

Dear Friends,

Thank you for your partnership in making health for all more than a slogan. Your support has helped make it possible for Global Health Ministries (GHM) to ship life-changing medical equipment and supplies around the globe to benefit some of the most vulnerable people on earth. Jeremie in Cameroon, who coordinates the receipt and distribution of supplies, wrote recently, "OSEELC is blessed once again with the arrival of 20,000 KG of materials and medical equipment from GHM. Yes we did it together! Praise God! Please know that we're so grateful for this shipment and opportunity of this wonderful partnership for the best care of our patients. They will feel Jesus Christ's blessings in their life. Be blessed again!"

Your gifts also help GHM reach into 13 low- and middle-income countries to partner with leaders like Besty in northern Nigeria. Besty trains village health workers



(VHWs) who teach their neighbors practical ways to avoid diseases like malaria and typhoid, how to check for malnutrition in their babies, and how to provide the most nutritious food for their children. Lessons like these are improving life for about 58,000 villagers every year, in an area plagued by poverty and persistently in the shadow of Boko Haram.

Through scholarships, program costs, shipping, and consulting with these brothers and sisters in Christ around the globe, your partnership is making a difference.

Together in Christ,


Doug Cox

Executive Director

Gift Amount: \$29.55

Designated to: GHM Mission Operations

Global Health Ministries is a 501(c)(3) organization. No goods or services were given in exchange for this gift.



Gratitude



September 19, 2022

Covenant Lutheran Church
1525 N Van Buren St
Stoughton, WI 53589-1028

Greetings to our ministry partners at Covenant Lutheran Church,

Thank you for supporting the mission of Lutherdale.

Your gift of \$14.78 in support of Lutherdale's ministry is a blessing and greatly appreciated. Your partnership is key during a time when health and safety demand our continued diligence.

Your support is a bright shining light and reminder that we are all in this together.

As Lutherdale looks forward, we realize the need for connection is more important than ever. Parents are seeking safe spaces for their children to explore who God made them to be. Children are craving outdoor adventure, meaningful friendships, and new summer experiences. Our summer camp program model is set up around small groups so that every camper has a cabin leader that will invest in, care for, and nurture each camper. At Lutherdale, children get time to try and practice new activities and learn more about what they love in a safe, Christ-centered community. Your gift makes ALL of this possible.

Lutherdale ran a successful summer camp program in 2020 and 2021, despite the very real challenges of a pandemic. Our 2022 summer camp season is open for registration and we are ready to welcome campers and families to experience God's love. 50Forward programs, Adult Retreats, and Travel Trips are also open for registration. With deep gratitude and joy, we look forward to welcoming people back to Lutherdale and living out our mission of building lives in Christ.

God bless you.

Jeffrey A. Bluhm
Executive Director
jeff@lutherdale.org
262.949.2283

Donor: Covenant Lutheran Church Gift: \$14.78 Type: Check #22805 Date: 08/18/2022

Lutherdale Bible Camp, Inc. is a 501(c)3 non-for-profit organization. All gifts to Lutherdale Bible Camp, Inc. are tax deductible to the full extent of the law. No goods or services were provided to the donor by Lutherdale Bible Camp, Inc. in consideration of this charitable donation.

N7891 U.S. Hwy 12 o. 262.742.2352 www.lutherdale.org
Elkhorn, WI 53121 f. 888.248.4551 info@lutherdale.org

Gratitude



CITY OF STOUGHTON

*381 East Main Street
Stoughton, Wisconsin 53589
(608) 873-6677*

September 7, 2022

Covenant Lutheran Church
1525 N Van Buren St
Stoughton, WI 53589

Dear Covenant Lutheran Church

On behalf of the Stoughton Food Pantry we thank you for your donation of 60 pounds of food.

The Stoughton food pantry is a valuable resource for needy families of our area, and many will benefit from your generosity. Your gift enables us to meet the needs of those who might otherwise go hungry.

With the surge of food prices many families are seeking out the pantry to help them provide healthy food. We have seen an increase of 70% over the past 4 months and expect that to continue. With your assistance that is possible.

Due to the generous support of our community we are now allowing pantry clients to utilize the pantry twice each month. We have increased the amount of food given to the clients and we have begun delivery to clients who are without transportation to the pantry. During the pandemic, we allow clients to place orders over the phone and use contactless delivery for pickup. As we continue thru 2022, we will be able to provide continued support to our local families in need. This is all due to the generosity of our donors and the tireless efforts of local volunteers.

We know there are many organizations that deserve your support. Thank you for making Stoughton Food Pantry a priority and helping us advance our mission.

Sincerely,

Volunteer
City of Stoughton Food Pantry



The Promise - October 2022

The monthly newsletter of Covenant Lutheran Church—ELCA

Covenant Lutheran Church
1525 N. Van Buren St.
Stoughton, WI 53589



Phone: (608) 873-7494
Email: covlutheran@covluth.org
Website: www.covluth.org



Like us on [Facebook](#), [Instagram](#) and [Twitter](#)

The next issue of "The Promise" will be published in November 2022.

*The deadline for submitting items for the **November** newsletter is **Monday, October 28.***

Please submit to form [here](#) or to covlutheran@covluth.org.

Thank you!

Covenant Lutheran Church
1525 N. Van Buren St.
Stoughton, WI 53589

